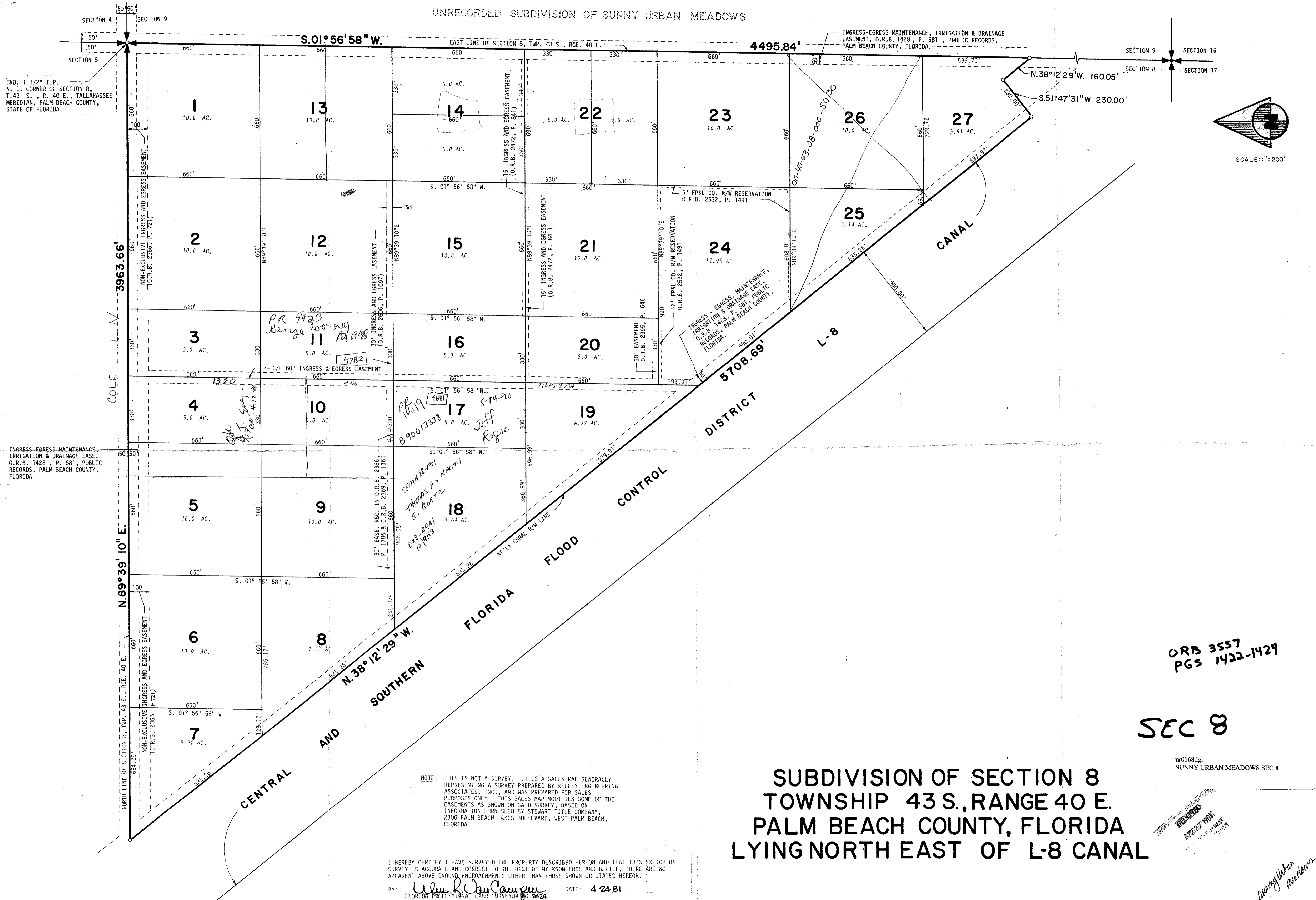
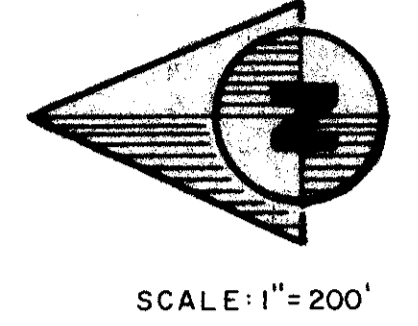


UNRECORDED SUBDIVISION OF SUNNY URBAN MEADOWS



FND. 1 1/2" I.P.
N. E. CORNER OF SECTION 8,
T. 43 S., R. 40 E., TALLAHASSEE
MERIDIAN, PALM BEACH COUNTY,
STATE OF FLORIDA.

INGRESS-EGRESS MAINTENANCE,
IRRIGATION & DRAINAGE EASE,
O.R.B. 1428, P. 581, PUBLIC
RECORDS, PALM BEACH COUNTY,
FLORIDA



NOTE: THIS IS NOT A SURVEY. IT IS A SALES MAP GENERALLY REPRESENTING A SURVEY PREPARED BY KELLEY ENGINEERING ASSOCIATES, INC., AND WAS PREPARED FOR SALES PURPOSES ONLY. THIS SALES MAP MODIFIES SOME OF THE EASEMENTS AS SHOWN ON SAID SURVEY, BASED ON INFORMATION FURNISHED BY STEWART TITLE COMPANY, 2300 PALM BEACH LAKES BOULEVARD, WEST PALM BEACH, FLORIDA.

I HEREBY CERTIFY I HAVE SURVEYED THE PROPERTY DESCRIBED HEREON AND THAT THIS SKETCH OF SURVEY IS ACCURATE AND CORRECT TO THE BEST OF MY KNOWLEDGE AND BELIEF, THERE ARE NO APPARENT ABOVE GROUND ENCROACHMENTS OTHER THAN THOSE SHOWN OR STATED HEREON.
BY: *William R. Van Camp* DATE: 4-21-81
FLORIDA PROFESSIONAL LAND SURVEYOR NO. 2424

SUBDIVISION OF SECTION 8
TOWNSHIP 43 S., RANGE 40 E.
PALM BEACH COUNTY, FLORIDA
LYING NORTH EAST OF L-8 CANAL

ORB 3557
PGS 1422-1424
SEC 8

ur0168.igr
SUNNY URBAN MEADOWS SEC 8



OWN	DR	DATE	BY
1-11-78			
CKD	INT	SCALE	SIZE
		1"=200'	L
			P

DATE	REVISIONS

SCOPE: SALES MAP
SUBDIVISION SECTION 8
FOR: ARLISS DENNIS

BENCH MARK
land surveying and mapping, inc.
2300 PALM BEACH LAKES BLVD., SUITE # 105, WEST PALM BEACH, FLORIDA... ZIP CODE 33409

WD. NO.
78-010

SHEET
1 OF 1